

Built in the Manor Marine shipyard in Portland, UK and delivered in April 2017, the Venture has been designed with the latest technology and MAN engines; the design maximises accommodation, deck space and carrying capacity.



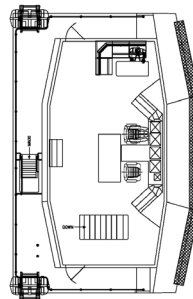
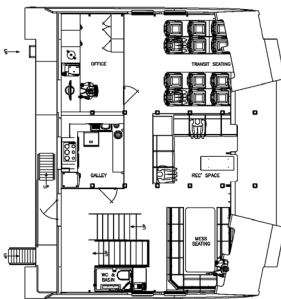
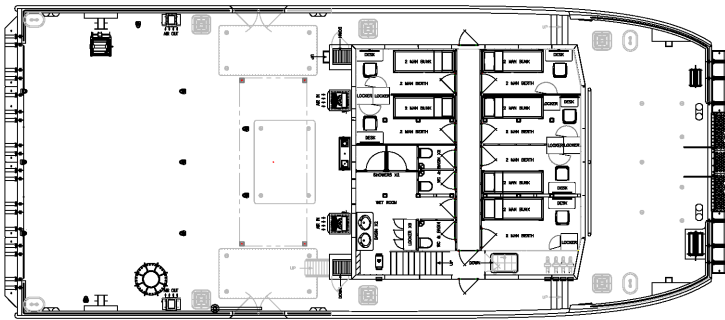
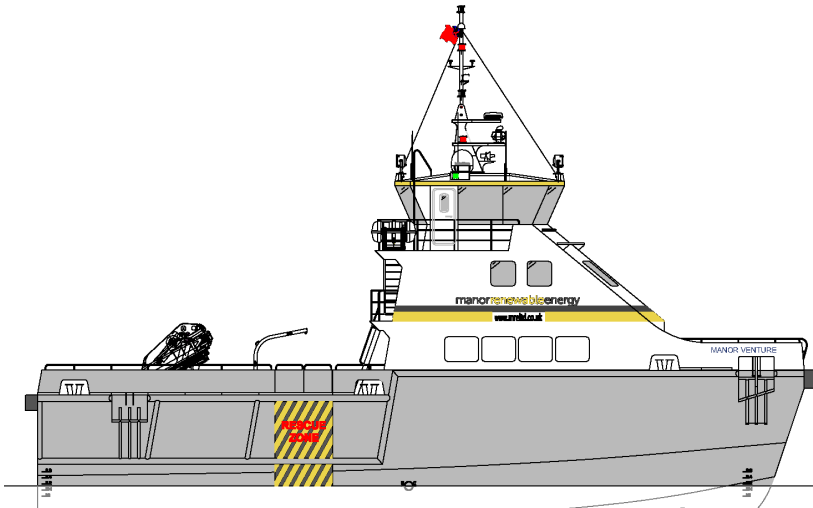
Manor Venture

A MULTI-PURPOSE OFFSHORE SUPPORT VESSEL

Manor Venture

A MULTI-PURPOSE OFFSHORE SUPPORT VESSEL

At 26 metres LOA with three decks providing accommodation for 12 personnel, deck space of 135m², fuel capacity of over 30t and an offshore endurance of 7 days, the Venture is a true multi-purpose vessel.



GENERAL SPECIFICATION

| | |
|----------------|--------------------|
| Length overall | 26.04 metres |
| Beam | 10.90 metres |
| Maximum draft | 2.16 metres |
| Displacement | 120 tonnes |
| Material | Aluminium |
| Aft deck space | 100 m ² |
| Fwd deck space | 35 m ² |
| Maximum speed | 22 knots |
| Fuel capacity | 35 tonnes |
| Range | 1300 nm |
| Cargo capacity | 40 tonnes |

MACHINERY

| | |
|----------------|--|
| Main engines | 2 x MAN D2862 LE466 |
| Gearbox | 2 x ZF-Marine, 3050 |
| Auxillary sets | 1 x 66 kVA & 1 x 41 kVA generators |
| Deck crane | 1 x HEILA HLM 20-35 TMC 11 tonnes at 1.9 metres |
| Bow thrusters | Hercules 2 x 32kW |

ACCOMMODATION

| | |
|--------------|-------------------------|
| Seating | 12 pax |
| Facilities | Full galley & mess room |
| Cabin spaces | 6 double cabins |

CLASSIFICATION

| | |
|----------------|---|
| Class notation | +100A1 SSc catamaran, HSC, workboat G3 |
| Flag/Coding | UK Cat 1 inc. DG |
| Personnel | 12 pax + 6 crew |

manorrenewableenergy

ABOUT MRE

Vessel provision, temporary power and engineering solutions for the offshore industry.

www.mreltd.co.uk

OFFICE LOCATIONS

Portland
Portsmouth
Hull
Glasgow
Taipei

CONTACT

T: 01305 820777

T: 02392 984819

E: info@mreltd.co.uk

