

Built in the Manor Marine shipyard in Portland, UK and delivered in July 2020, the Endurance has been designed with the latest technology and quad IPS units; the design maximises accommodation, deck space and carrying capacity.



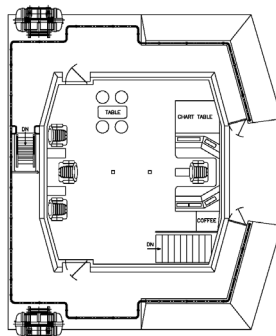
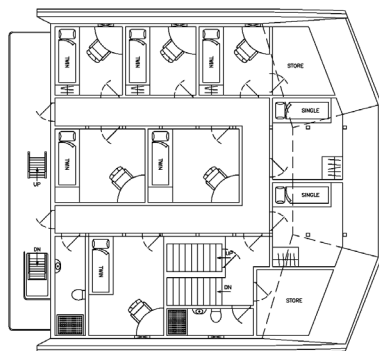
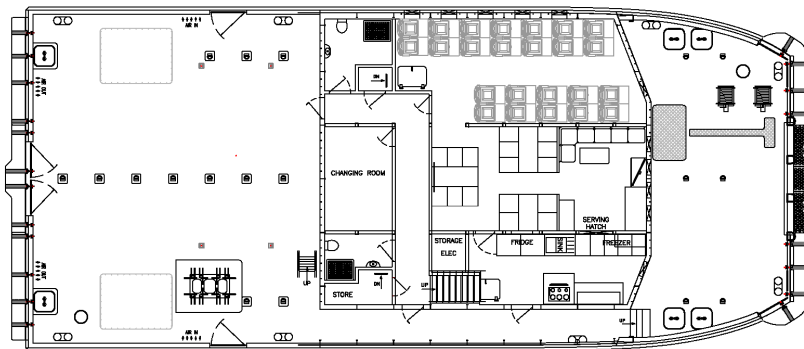
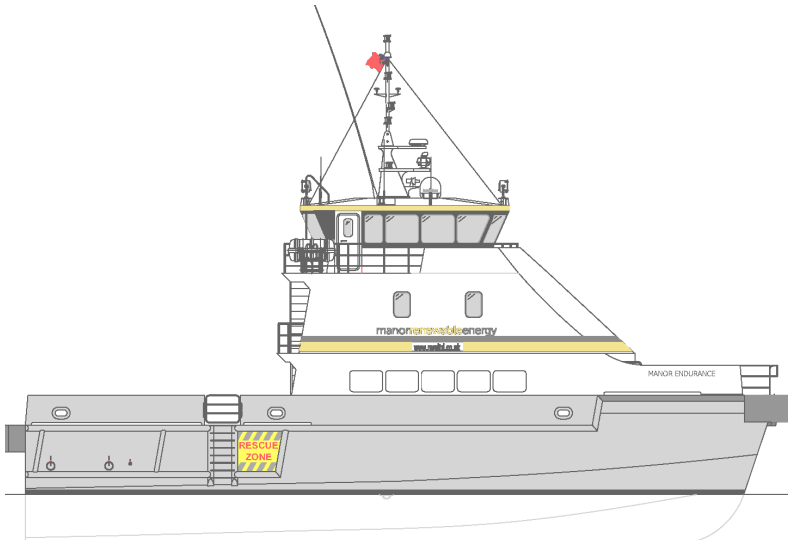
# Manor Endurance

A MULTI-PURPOSE OFFSHORE SUPPORT VESSEL

# Manor Endurance

A MULTI-PURPOSE OFFSHORE SUPPORT VESSEL

At 26 metres LOA with three decks providing accommodation for 14 personnel, deck space of 140m<sup>2</sup>, fuel capacity of over 30t and an offshore endurance of 7 days, the Endurance is a true multi-purpose vessel.



## GENERAL SPECIFICATION

Length overall	26.46 metres
Beam	10.90 metres
Maximum draft	2.56 metres
Displacement	148 tonnes
Material	Aluminium
Aft deck space	100 m <sup>2</sup>
Fwd deck space	40 m <sup>2</sup>
Maximum speed	23 knots
Fuel capacity	34 tonnes
Range	1800 nm
Cargo capacity	40 tonnes

## MACHINERY

Main engines	4 x 700hp Volvo Penta D13
Propulsion	4 x IPS 900
Auxillary sets	2 x synchronised 35 kw Kohler generators
Deck crane	Fassi 215 9 tonnes at 2 metres

## ACCOMMODATION

Seating	24 pax
Facilities	Full galley & mess room
Cabin spaces	6 double cabins & 2 single cabins

## CLASSIFICATION

Class notation	BV Windfarm Service Ship S1
Flag/Coding	UK Cat 1 HS-OSC inc. DG
Personnel	24 pax + 4 crew

manor**renewable**energy

## ABOUT MRE

Vessel provision, temporary power and engineering solutions for the offshore industry.

[www.mreltd.co.uk](http://www.mreltd.co.uk)

## OFFICE LOCATIONS

Portland  
Portsmouth  
Hull  
Glasgow  
Taipei

## CONTACT

T: 01305 820777

T: 02392 984819

E: [info@mreltd.co.uk](mailto:info@mreltd.co.uk)

